

Sask 1Call
 1-866-828-4888
 sask1call.com
 CALL AT LEAST TWO FULL WORKING DAYS BEFORE YOU PLAN TO DIG

- NOTES:**
- SERVICES TO BE INSTALLED IN A 4 PARTY TRENCH WHERE APPLICABLE.
 - ALL PADMOUNT TRANSFORMERS ADJACENT TO CURBS/ SIDEWALKS ARE TO BE LOCATED 1.5m BACK OF CURB TO FACE OF TRANSFORMER UNLESS NOTED OTHERWISE.
 - DIMENSIONS INDICATE CENTER OF TRENCH. REFER TO APPLICABLE TRENCH STANDARD DETAILS FOR ACTUAL ALIGNMENT WITHIN THE TRENCH. FOR 4 PARTY JOINT USE, REFER TO B-14-66.
 - ALL SERVICE CABLE TO BE 1/0 AL UNLESS OTHERWISE NOTED.
 - A 2" SPARE DUCT SHALL FOLLOW EACH RUN OF 1X#1AL PRIMARY CONDUCTOR

REFER TO SASKPOWER STANDARDS FOR INSTALLATION:

OF TRENCH, EASEMENT, TRANSFORMER, PEDESTAL AND CABLE MARKER DETAILS

TRENCH ALIGNMENT REFERENCES ARE AS FOLLOWS:

- 4 PARTY SERVICE TRENCH B-14-59
- 4 PARTY MAIN TRENCH B-14-66
- 3 PARTY MAIN TRENCH B-14-(50-70)

-EXCEPTIONS ARE DIMENSIONED AS NOTED

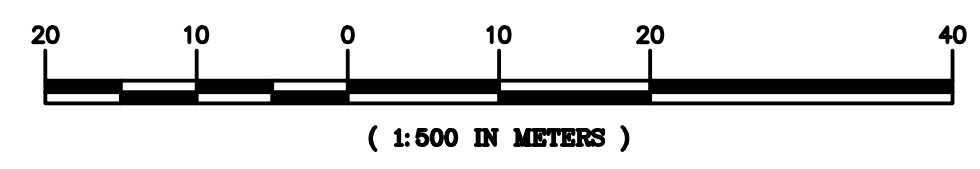
LEGEND:

- PEDESTAL
- TRANSFORMER WITH SWITCH
- SECONDARY STUB BOX
- TRENCH CENTER LINE

ABBREVIATIONS	FULL MEANING
1AL	1 ALXLcE
500	500 ALPEL
350	350 ALPEJ
4/0	4/0 ALPEJ
1/0	1/0 ALPEJ
4	4 ALPEJ
-	CABLE MARKER DETAILS

THE SERVICE PROVIDER LOGO AND CONTACT INFO IS PLACED HERE.

EXAMPLE



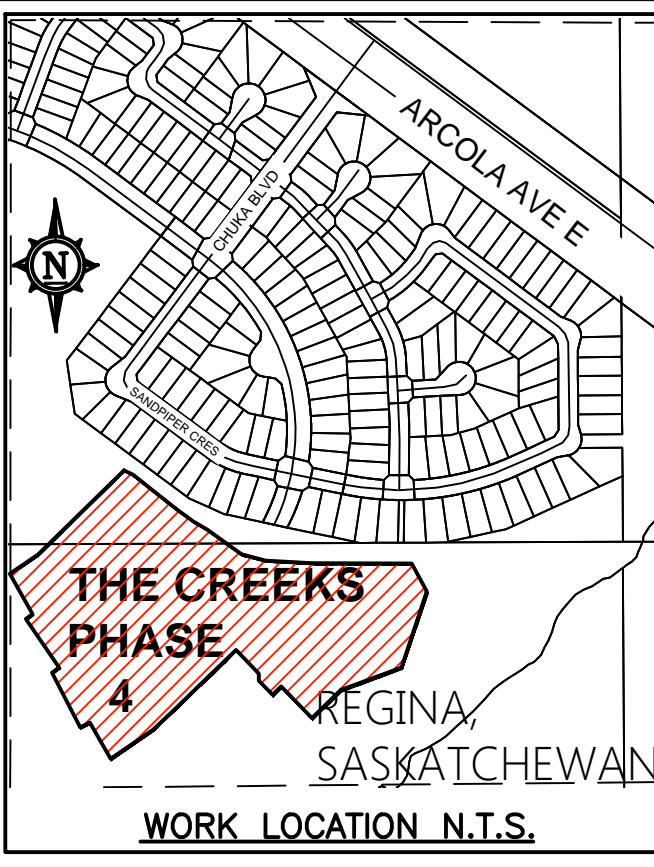
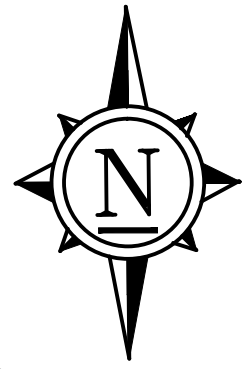
PLAN
1:500

REF#	DRAWING NUMBER	NO	REMARKS	DATE	DESIGNED	INDEP CHK	DFTG CHK	INSP	REV	ACPT	NO	REMARKS	DATE	DESIGNED	INDEP CHK	DFTG CHK	INSP	REV	ACPT	
REFERENCE	DRAWINGS																			
			REVISIONS																	

DSGN	
INDEP CHK	
DFTG	
DFTG CHK	
INSP	
REV	
ACPT	

SaskPower
REGINA
 UNDERGROUND DUCT AND STRUCTURES FOR
 CREEKS PHASE 4
 SERVICE PROVIDER NAME
 NOTIFICATION NUMBER 2341235321

DATE: 2012-12-26
 SCALE: 1:500
 DWG NO: U07-2341234
 SHEET 3 OF 7
 SIZE D R 1



CALL AT LEAST TWO FULL WORKING DAYS BEFORE YOU PLAN TO DIG

- NOTES:**
- SERVICES TO BE INSTALLED IN A 4 PARTY TRENCH WHERE APPLICABLE.
 - ALL PADMOUNT TRANSFORMERS ADJACENT TO CURBS/ SIDEWALKS ARE TO BE LOCATED 1.5m BACK OF CURB TO FACE OF TRANSFORMER UNLESS NOTED OTHERWISE.
 - DIMENSIONS INDICATE CENTER OF TRENCH. REFER TO APPLICABLE TRENCH STANDARD DETAILS FOR ACTUAL ALIGNMENT WITHIN THE TRENCH. FOR 4 PARTY JOINT USE, REFER TO B-14-66.
 - ALL SERVICE CABLE TO BE 1/0 AL UNLESS OTHERWISE NOTED.
 - A 2" SPARE DUCT SHALL FOLLOW EACH RUN OF 1X#1AL PRIMARY CONDUCTOR

REFER TO SASKPOWER STANDARDS FOR INSTALLATION:

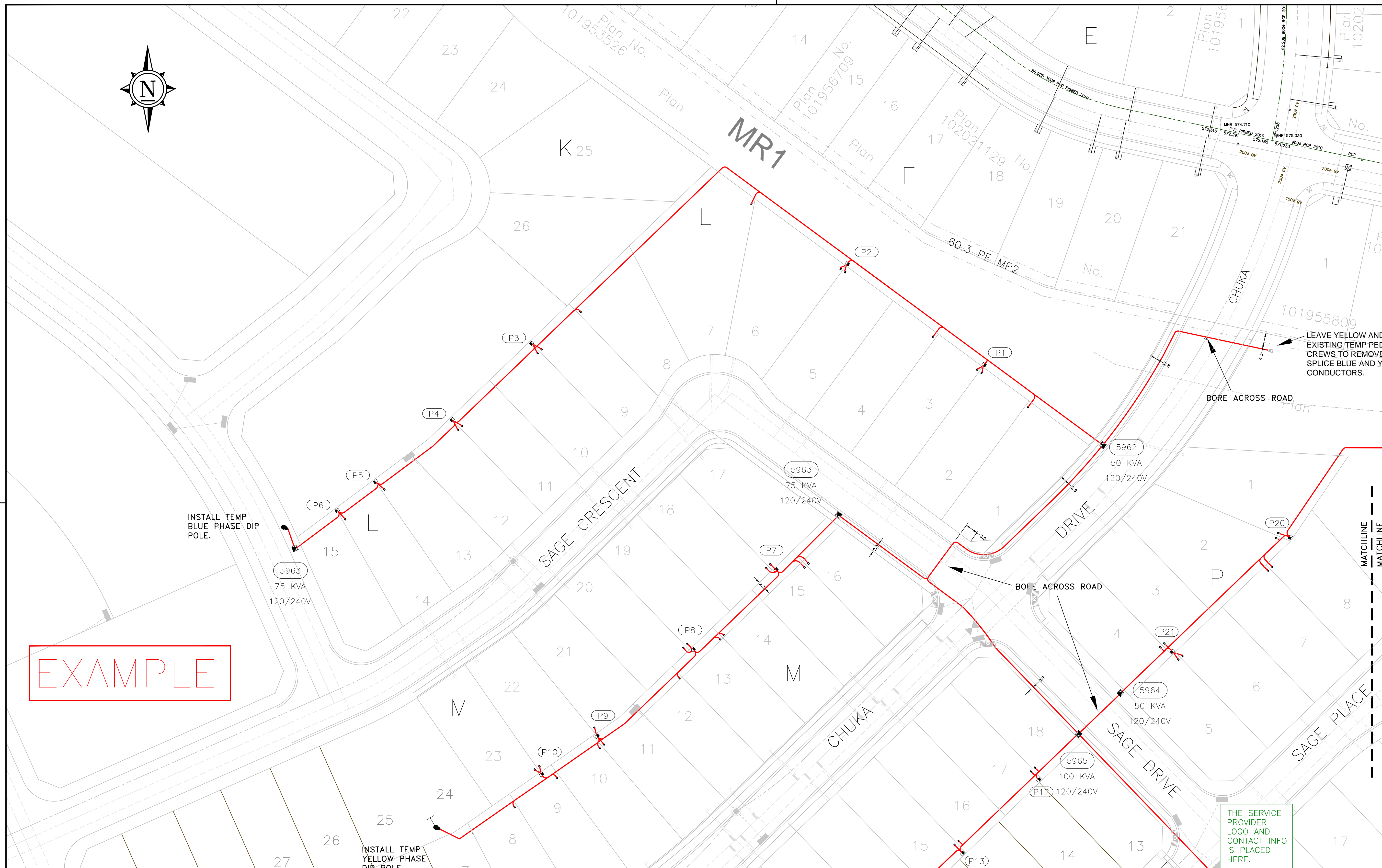
OF TRENCH, EASEMENT, TRANSFORMER, PEDESTAL AND CABLE MARKER DETAILS

TRENCH ALIGNMENT REFERENCES ARE AS FOLLOWS:

- 4 PARTY SERVICE TRENCH B-14-59
- 4 PARTY MAIN TRENCH B-14-66
- 3 PARTY MAIN TRENCH B-14-(50-70)
- EXCEPTIONS ARE DIMENSIONED AS NOTED

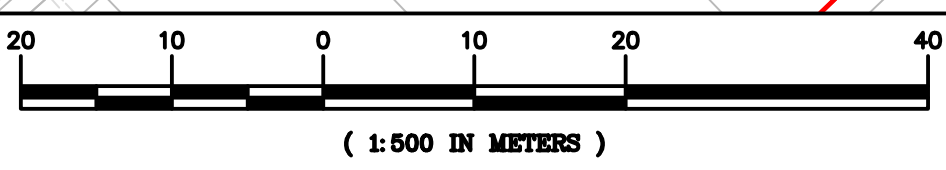
- LEGEND:**
- PEDESTAL
 - TRANSFORMER WITH SWITCH
 - SECONDARY STUB BOX
 - TRENCH CENTER LINE

ABBREVIATIONS	FULL MEANING
1AL	1 ALXLcE
500	500 ALPEL
350	350 ALPEJ
4/0	4/0 ALPEJ
1/0	1/0 ALPEJ
4	4 ALPEJ
-	CABLE MARKER DETAILS



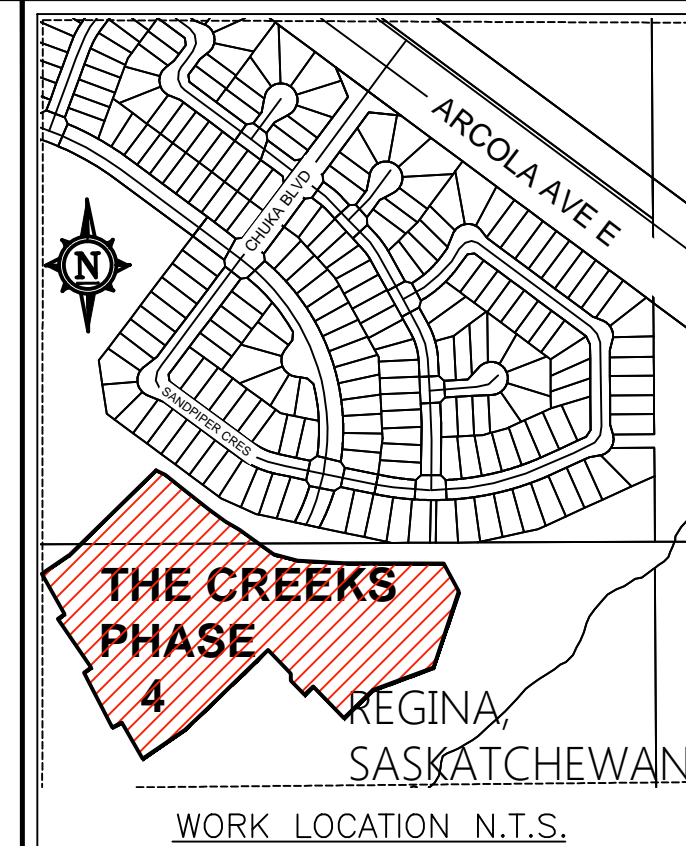
EXAMPLE

THE SERVICE PROVIDER LOGO AND CONTACT INFO IS PLACED HERE.



PLAN 1:500

												REGION	000	DSGN		APEG-S P.ENG. SEAL GOES HERE	<p>REGINA EAST UNDERGROUND DUCT AND STRUCTURES FOR CREEKS PHASE 4 SERVICE PROVIDER NAME</p>												
												DISTRICT	000	INDEP	CHK														
												GRID	0	DFTG	CHK														
												SERV#	000	DFTG	CHK														
												QUOTE#	000	INSP															
REF#	DRAWING NUMBER	NO	REMARKS	DATE	DESIGNED	INDEP	DFTG	DFTG	INSP	REV	ACPT	NO	REMARKS	DATE	DESIGNED	INDEP	DFTG	DFTG	INSP	REV	ACPT	NO	DATE	SCALE	DWG NO	SHEET	OF	SIZE	R
						CHK	CHK	CHK								CHK	CHK	CHK					2012-12-26	1:500	U07-2341234	4	7	D	1



NOTES:

- SERVICES TO BE INSTALLED IN A 4 PARTY TRENCH WHERE APPLICABLE.
- ALL PADMOUNT TRANSFORMERS ADJACENT TO CURBS/ SIDEWALKS ARE TO BE LOCATED 1.5m BACK OF CURB TO FACE OF TRANSFORMER UNLESS NOTED OTHERWISE.

REFER TO SASKPOWER STANDARDS FOR INSTALLATION:

TRENCH ALIGNMENT REFERENCES ARE AS FOLLOWS:

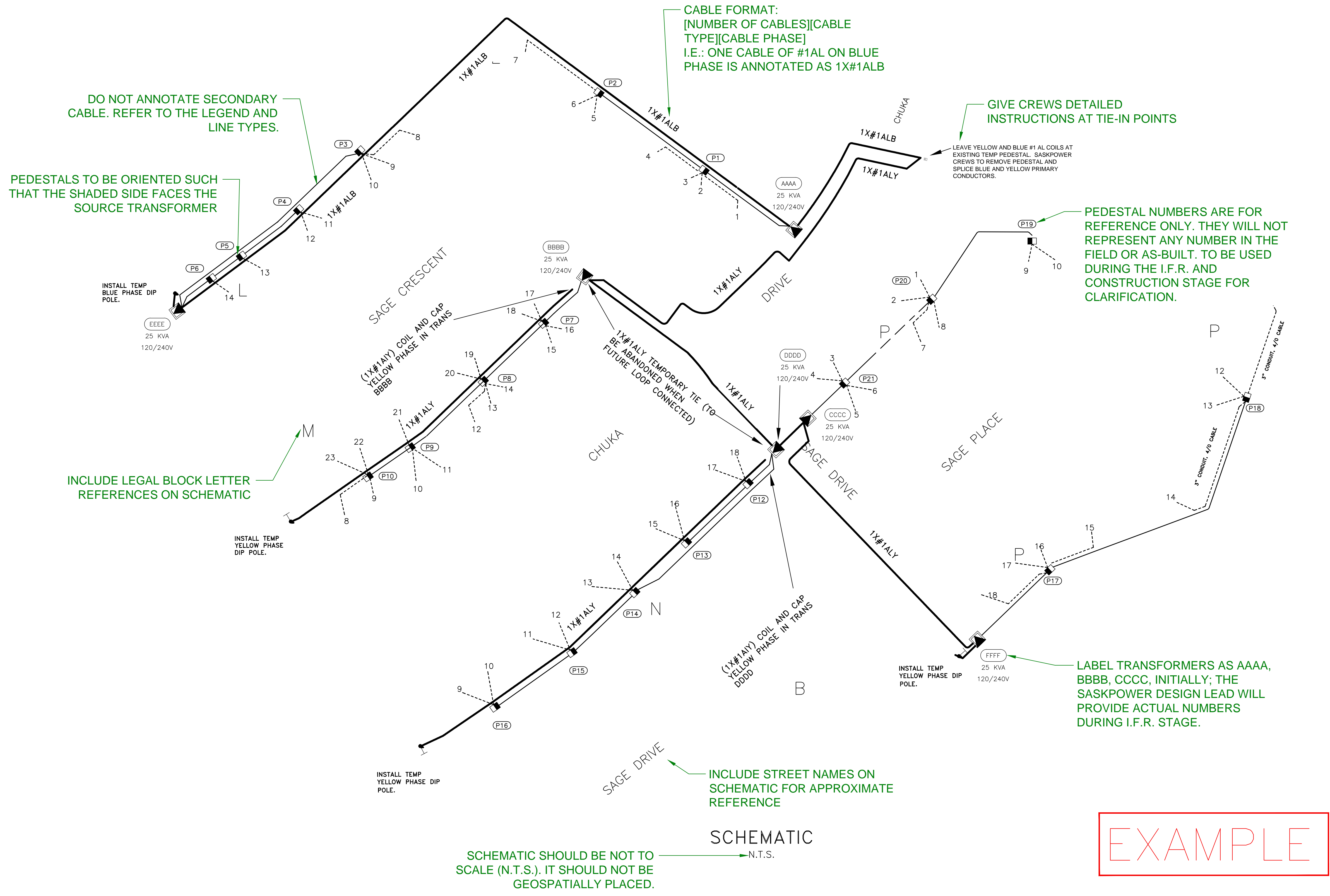
- 4 PARTY SERVICE TRENCH B-14-59
- 4 PARTY MAIN TRENCH B-14-66
- 3 PARTY MAIN TRENCH B-14-(50-70)
- EXCEPTIONS ARE DIMENSIONED AS NOTED

POWER AND COMMUNICATION FACILITIES ARE TO HAVE SEPARATE BORES ACROSS ROADS FROM GAS.

LEGEND:

- PEDESTAL
- TRANSFORMER WITH SWITCH
- PRIMARY CONDUCTOR (WITH 2" SHADOW DUCT)
- SECONDARY CONDUCTOR 500 ALPEJ
- 2" SERVICE STUB UNLESS OTHERWISE NOTED

ABBREVIATIONS	FULL MEANING
1AL	1 ALXLcE
500	500 ALPEJ
350	350 ALPEJ
4/O	4/O ALPEJ
1/O	1/O ALPEJ
4	4 ALPEJ



EXAMPLE

THE SERVICE PROVIDER LOGO AND CONTACT INFO IS PLACED HERE.

SCHMATIC SHOULD BE NOT TO SCALE (N.T.S.). IT SHOULD NOT BE GEOSPATIALLY PLACED.

SCHMATIC
→ N.T.S.

INCLUDE STREET NAMES ON SCHEMATIC FOR APPROXIMATE REFERENCE

LABEL TRANSFORMERS AS AAAA, BBBB, CCCC, INITIALLY; THE SASKPOWER DESIGN LEAD WILL PROVIDE ACTUAL NUMBERS DURING I.F.R. STAGE.

GIVE CREWS DETAILED INSTRUCTIONS AT TIE-IN POINTS

PEDESTAL NUMBERS ARE FOR REFERENCE ONLY. THEY WILL NOT REPRESENT ANY NUMBER IN THE FIELD OR AS-BUILT. TO BE USED DURING THE I.F.R. AND CONSTRUCTION STAGE FOR CLARIFICATION.

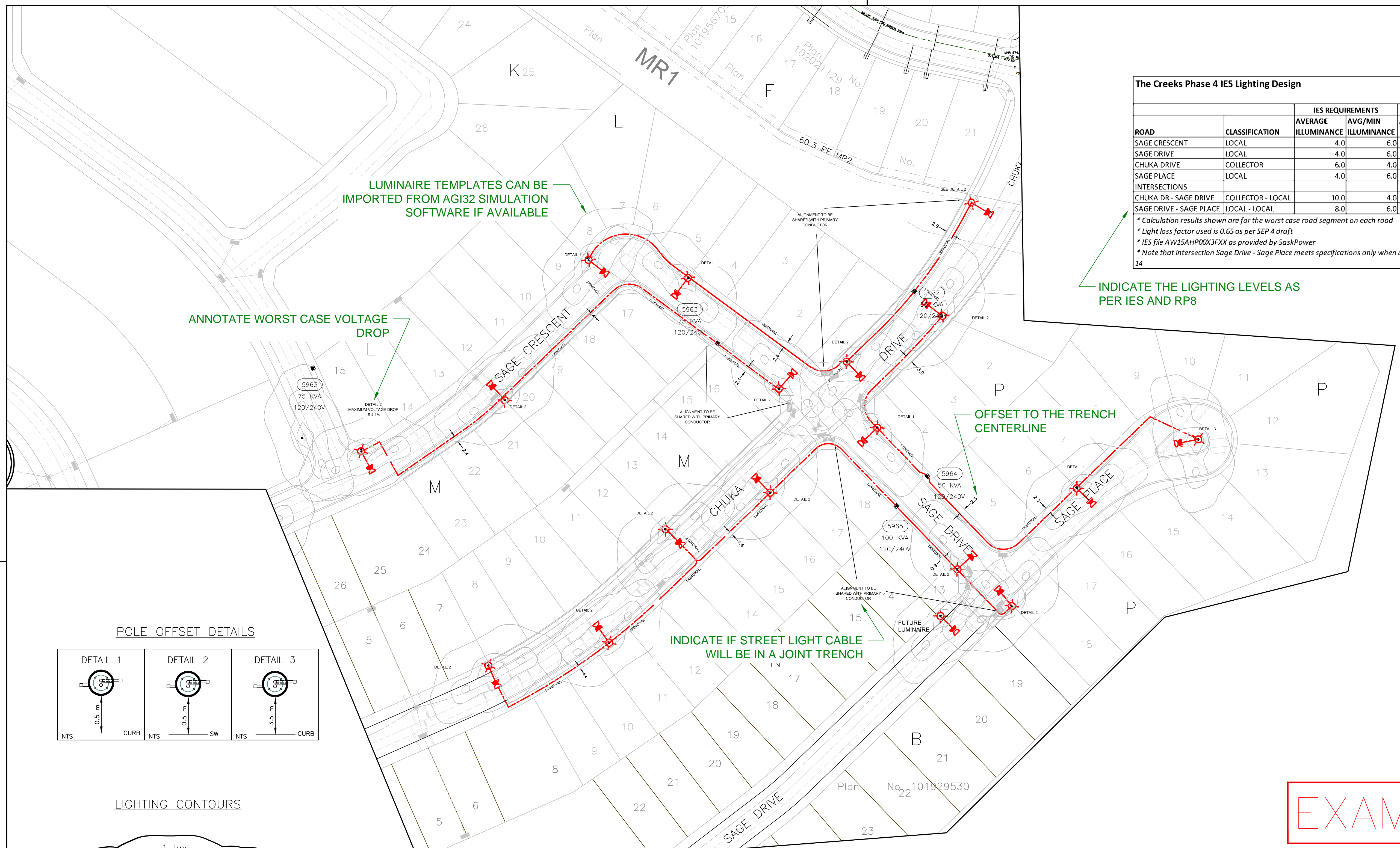
CABLE FORMAT:
[NUMBER OF CABLES][CABLE TYPE][CABLE PHASE]
I.E.: ONE CABLE OF #1AL ON BLUE PHASE IS ANNOTATED AS 1X#1ALB

DO NOT ANNOTATE SECONDARY CABLE. REFER TO THE LEGEND AND LINE TYPES.

PEDESTALS TO BE ORIENTED SUCH THAT THE SHADED SIDE FACES THE SOURCE TRANSFORMER

INCLUDE LEGAL BLOCK LETTER REFERENCES ON SCHEMATIC

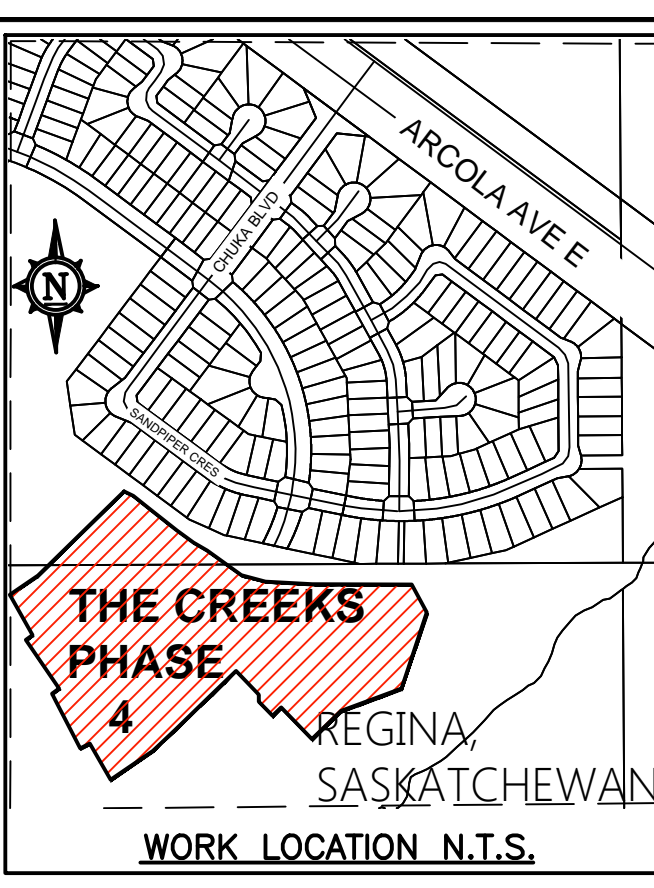
										<table border="1" style="width: 100%; border-collapse: collapse;"> <tr> <td>DSGN</td> <td></td> </tr> <tr> <td>INDEP CHK</td> <td></td> </tr> <tr> <td>DFTG</td> <td></td> </tr> <tr> <td>DFTG CHK</td> <td></td> </tr> <tr> <td>INSP</td> <td></td> </tr> <tr> <td>REV</td> <td></td> </tr> <tr> <td>ACPT</td> <td></td> </tr> </table>										DSGN		INDEP CHK		DFTG		DFTG CHK		INSP		REV		ACPT		<p>APEG-S P.ENG. SEAL GOES HERE</p>		<p>SaskPower REGINA WORK ORDER NUMBER 123298908 PRIMARY AND SECONDARY SCHEMATIC DIAGRAM CREEKS PHASE 4 NOTIFICATION NUMBER 12344555</p>	
DSGN																																					
INDEP CHK																																					
DFTG																																					
DFTG CHK																																					
INSP																																					
REV																																					
ACPT																																					
REF#	DRAWING NUMBER	NO	REMARKS	DATE	DESIGNED	INDEP CHK	DFTG	DFTG CHK	INSP	REV	ACPT	NO	REMARKS	DATE	DESIGNED	INDEP CHK	DFTG	DFTG CHK	INSP	REV	ACPT	NO	DATE	SCALE	DWG NO	SHEET	OF	SIZE	R								
																							2012-12-26	N.T.S.	U07-2341234	5	7	D	1								



The Creeks Phase 4 IES Lighting Design

ROAD	CLASSIFICATION	IES REQUIREMENTS		DESIGN ACTUALS		MEETS SPECS?
		AVERAGE ILLUMINANCE	AVG/MIN ILLUMINANCE	AVERAGE ILLUMINANCE	AVG/MIN ILLUMINANCE	
SAGE CRESCENT	LOCAL	4.0	6.0	5.5	6.1	YES
SAGE DRIVE	LOCAL	4.0	6.0	4.7	4.7	YES
CHUKA DRIVE	COLLECTOR	6.0	4.0	6.3	3.9	YES
SAGE PLACE	LOCAL	4.0	6.0	5.0	5.5	YES
INTERSECTIONS						
CHUKA DR - SAGE DRIVE	COLLECTOR - LOCAL	10.0	4.0	10.7	2.9	YES
SAGE DRIVE - SAGE PLACE	LOCAL - LOCAL	8.0	6.0	8.1	3.4	YES

* Calculation results shown are for the worst case road segment on each road
 * Light loss factor used is 0.65 as per SEP 4 draft
 * IES file AW15AHPO0X3FXX as provided by SaskPower
 * Note that intersection Sage Drive - Sage Place meets specifications only when a future light is installed between 13 & 14



Sask 1st Call
 1-866-828-4888
 sask1stcall.com
 CALL AT LEAST TWO FULL WORKING DAYS BEFORE YOU PLAN TO DIG

- NOTES:**
- SERVICES TO BE INSTALLED IN A 4 PARTY TRENCH WHERE APPLICABLE.
 - ALL PADMOUNT TRANSFORMERS ADJACENT TO CURBS/ SIDEWALKS ARE TO BE LOCATED 1.5m BACK OF CURB TO FACE OF TRANSFORMER UNLESS NOTED OTHERWISE.
 - DIMENSIONS INDICATE CENTER OF TRENCH. REFER TO APPLICABLE TRENCH STANDARD DETAILS FOR ACTUAL ALIGNMENT WITHIN THE TRENCH. FOR 4 PARTY JOINT USE, REFER TO B-14-66.
 - ALL SERVICE CABLE TO BE 1/0 AL UNLESS OTHERWISE NOTED.
 - A 2" SPARE DUCT SHALL FOLLOW EACH RUN OF 1X#1AL PRIMARY CONDUCTOR

REFER TO SASKPOWER STANDARDS FOR INSTALLATION:

OF TRENCH, EASEMENT, TRANSFORMER, PEDESTAL AND CABLE MARKER DETAILS

TRENCH ALIGNMENT REFERENCES ARE AS FOLLOWS:

- 4 PARTY SERVICE TRENCH B-14-59
- 4 PARTY MAIN TRENCH B-14-66
- 3 PARTY MAIN TRENCH B-14-(50-70)
- EXCEPTIONS ARE DIMENSIONED AS NOTED

LEGEND:

- PEDESTAL
- TRANSFORMER WITH SWITCH
- SECONDARY STUB BOX
- TRENCH CENTER LINE
- 150 WATT POST TOP LUMINAIRES
- DIRECT BURIED UNDERGROUND
- STREET LIGHT CABLE, SIZE AS NOTED

ABBREVIATIONS FULL MEANING

1AL	1 ALXLcE
500	500 ALPEL
350	350 ALPEJ
4/0	4/0 ALPEJ
1/0	1/0 ALPEJ
4	4 ALPEJ
- CABLE MARKER DETAILS	

LUMINAIRE TEMPLATES CAN BE IMPORTED FROM AGI32 SIMULATION SOFTWARE IF AVAILABLE

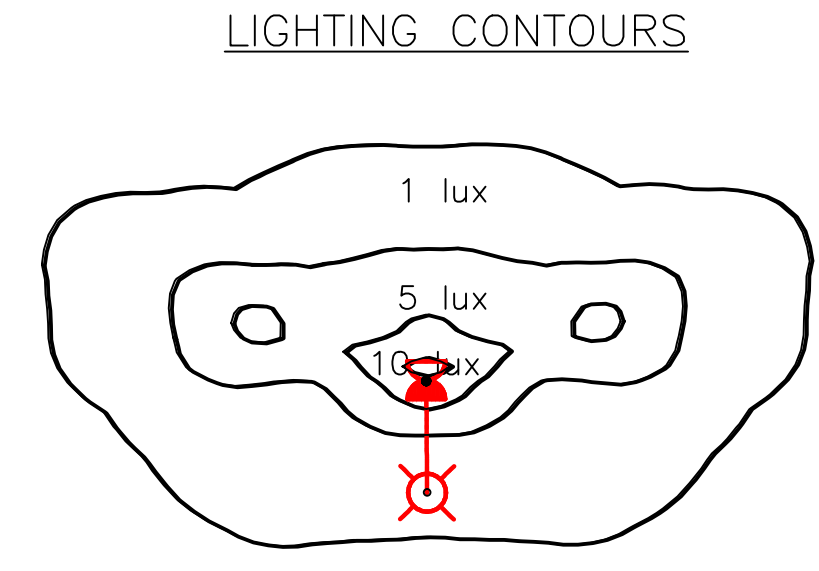
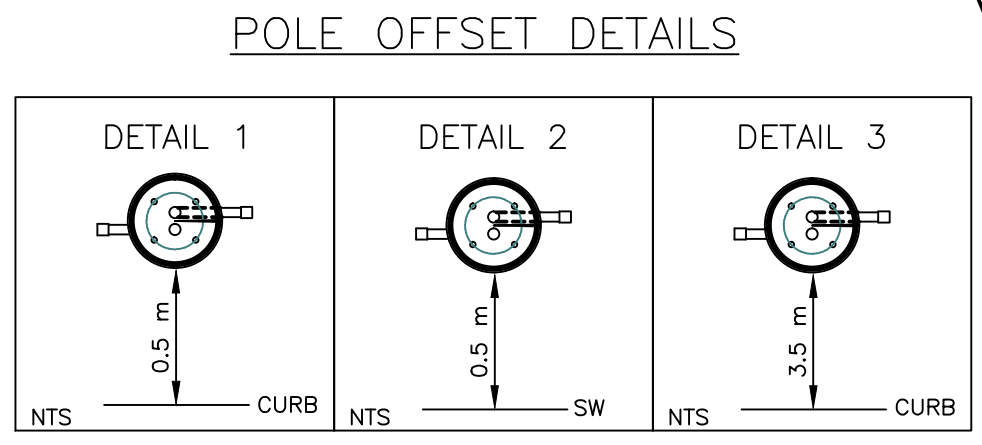
ANNOTATE WORST CASE VOLTAGE DROP

INDICATE THE LIGHTING LEVELS AS PER IES AND RP8

OFFSET TO THE TRENCH CENTERLINE

INDICATE IF STREET LIGHT CABLE WILL BE IN A JOINT TRENCH

IDENTIFY WHICH LUMINAIRES ARE USED IN THE DESIGN



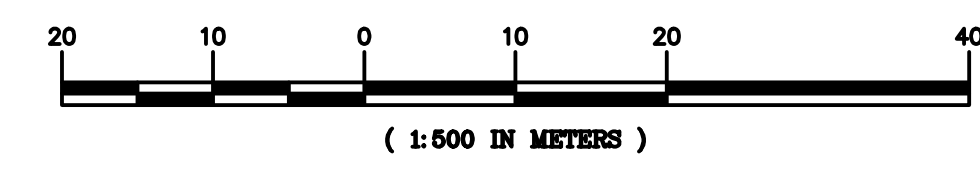
(150W HPS)
 WASHINGTON POSTLITE WITH TRILLIUM DECORATIVE STANDARD
 (AS PER STANDARD B-20-40 AND B-20-41)

- CONSTRUCTION NOTES:**
- INSTALL WASHINGTON POSTLITE 150W HPS LUMINAIRE AS PER B-20-40 COLUMN A
 - ALL LUMINAIRES INCLUDE PHOTO CONTROL (STOCK #31640)
 - MOUNTING HEIGHT IS 4.88 m
 - Include B-20-35 fuse at all street light connections in the transformer.

- DESIGN NOTES:**
- IES PHOTOMETRIC FILE IS AW15AHPO0X3NXX
 - LIGHT LOSS FACTOR USED IS 0.65 AS PER SEP 4 DRAFT
 - LIGHTING MEETS IES SPECIFICATIONS BASED ON ILLUMINANCE METHOD
 - MAXIMUM ALLOWED VOLTAGE DROP IS 8%. THERE ARE NO VOLTAGE DROP ISSUES IN THIS DESIGN.

EXAMPLE

THE SERVICE PROVIDER LOGO AND CONTACT INFO IS PLACED HERE.

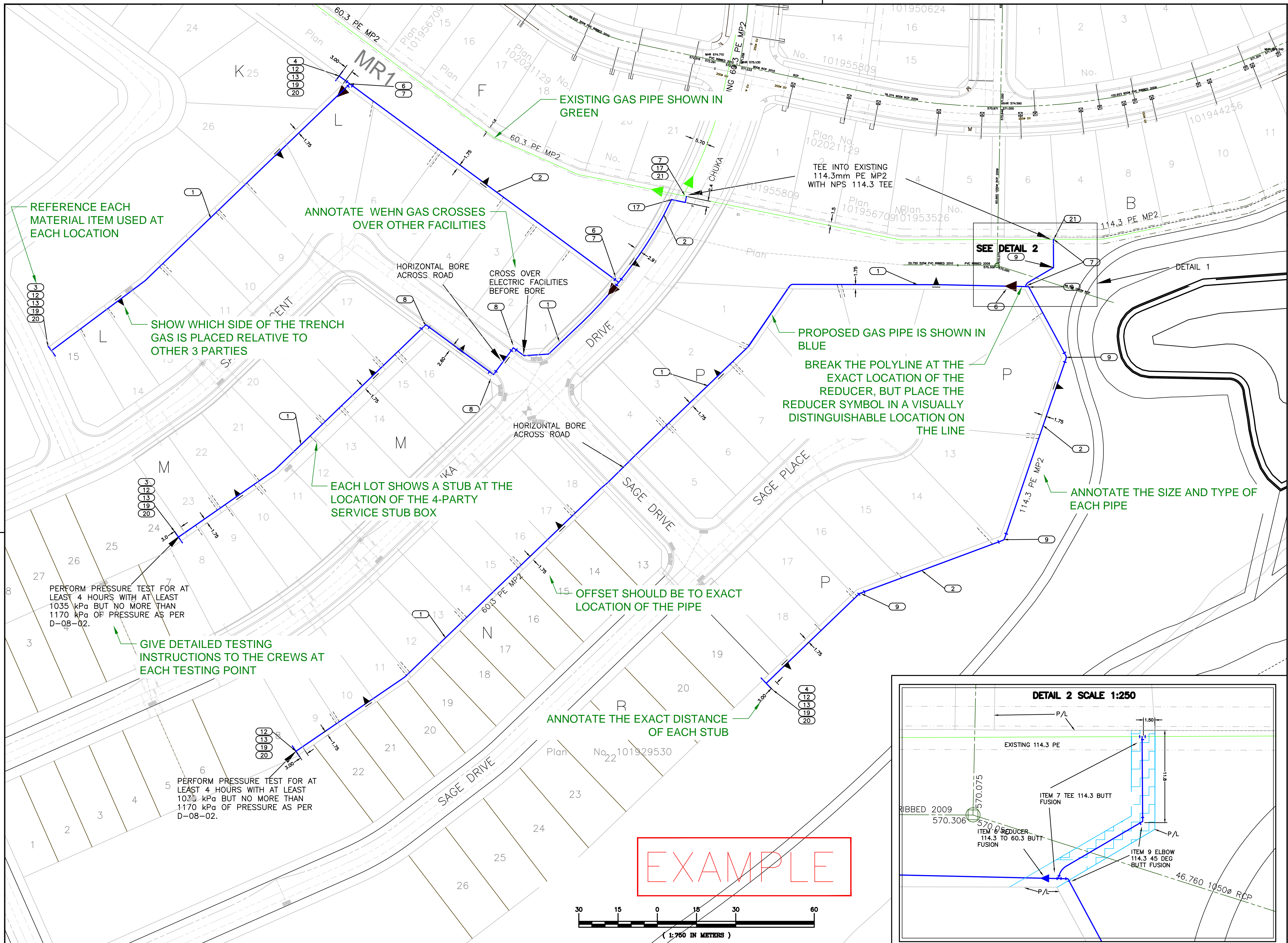


PLAN
1:750

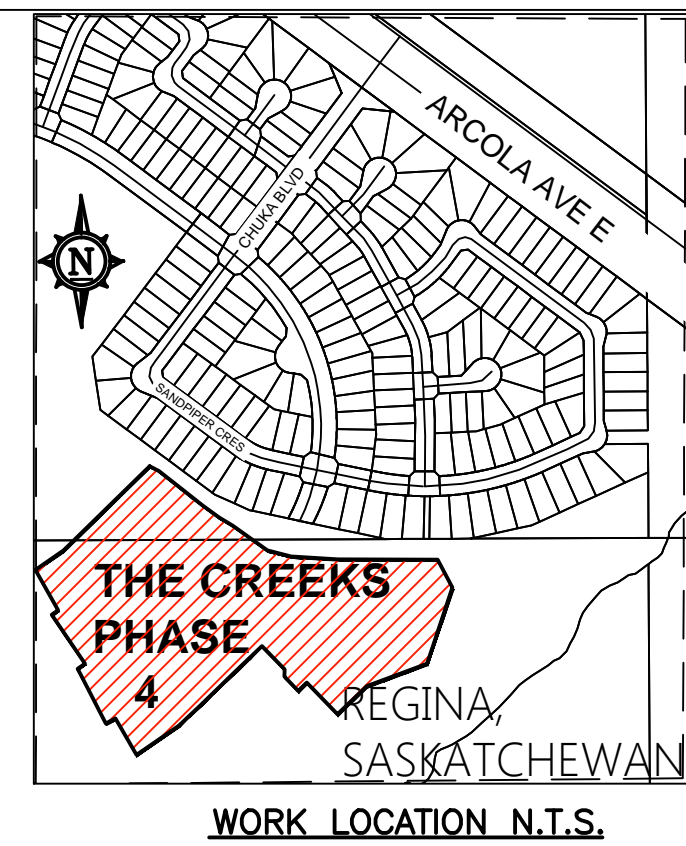
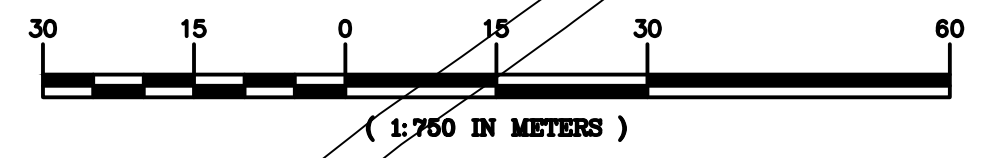
										REGION	000	DSGN																					
										DISTRICT	0	INDEP CHK																					
										GRID	0	DFTG																					
										SERV#	000	DFTG CHK																					
										QUOTE#	000	INSP																					
												REV																					
												ACPT																					
REF#	DRAWING NUMBER	NO	REMARKS	DATE	DESIGNED	INDEP CHK	DFTG	DFTG CHK	INSP	REV	ACPT	NO	REMARKS	DATE	DESIGNED	INDEP CHK	DFTG	DFTG CHK	INSP	REV	ACPT	NO	REMARKS	DATE	DESIGNED	INDEP CHK	DFTG	DFTG CHK	INSP	REV	ACPT	NO	
REFERENCE DRAWINGS		REVISIONS		REVISIONS		REVISIONS		REVISIONS		REVISIONS		REVISIONS		REVISIONS		REVISIONS		REVISIONS		REVISIONS		REVISIONS		REVISIONS		REVISIONS		REVISIONS		REVISIONS		REVISIONS	

APEG-S
P.ENG. SEAL
GOES HERE

SaskPower
 REGINA
 EAST
 STREET LIGHTING
 SUBDIVISION NAME
 SERVICE PROVIDER NAME



EXAMPLE

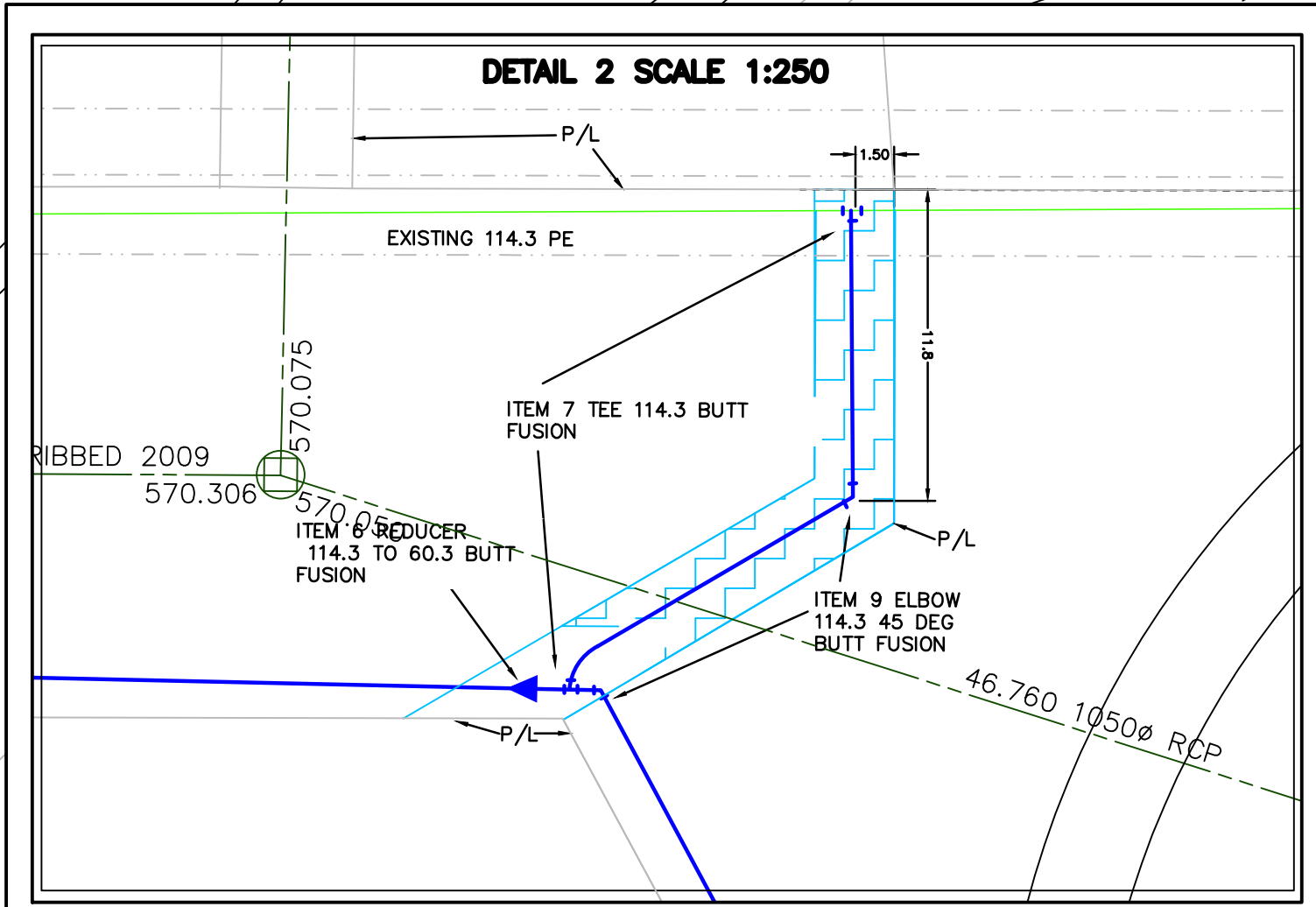


ITEM	MATERIAL CODE	DESCRIPTION	QUANTITY	ACTUALS
1	01090032	PE NPS 2 60.3 OD X 5.5 WT 900M/REEL	800	
2	01090040	PE NPS 4 114.3 OD X 10.4 WT 270M/REEL	450	
3	02091535	CAP - NPS 2" - BUTT FUSION PE 2306 CSA B137.4	3	
4	02091540	CAP - NPS 4" - BUTT FUSION PE 2306 CSA B137.4	2	
6	2096638	REDUCER - NPS 4 X NPS 2 BUTT FUSION - PE	3	
7	02097490	TEE - 4" NPS - SDR11 - BUTT FUSION	3	
8	02098232	ELBOW - NPS 2" - 90 DEG BUTT FUSION - PE 2306 -	3	
9	02098445	ELBOW - NPS 4" - 45 DEG BUTT FUSION - PE 2306 -	5	
10	04190514	WIRE - #14 SMALL REEL (300 mtrs) COPPER WITH 2/64 PVC	1500	
11	04190520	SLEEVE - CU - 1/4" DIA. X 1" LONG USED TO CRIMP	100	
12	04190700	GAS LINE MARKER BALL YELLOW, 83.0 kHz	5	
13	05537125	POST-SIGN-SEI CHANNEL (1 1/2" X 8") - 3.81 Metal	5	
14	02091408	CAP - CTS 1/2" - SOCKET FUSION - PE 2306 SDR 7 -	60	
15	01090008	PE NPS 1/2 15.9 OD X 2.3 WT 300M/COIL ON PALLETS POLY WRAP	132	
16	02087472	TEE - NPS 2 X NPS 1/2 - SERVICE CLAMP-ON ELIMINATOR	60	
17	02098240	ELBOW - NPS 4" - 90 DEG BUTT FUSION - PE 2306 -	2	
18	05058636	BOLT - HEX HEAD - 3/8 X 2" CADMIUM PLATED C/W NUT ROUND WASHER	10	
19	02094940	COUPLING - REPAIR - NPS 4" - SDR 11 PE - DRESSER	0	
20	5643003	SIGN - DANGER FOR URBAN HIGH PRESSURE NATURAL	5	
21	2099040	COUPLING 4" IPS PART NUMBER 89 000400	1	

- LEGEND**
- PROPOSED MAIN TRENCH SEE SASKPOWER B-14-66
 - EXISTING GAS
 - (9) MATERIAL CODES
 - 2.0 - OFFSETS INDICATE TO LINE OF PIPE
 - ▲ REDUCER
 - ⊥ CAP
- TYPES OF CONNECTIONS**
- ⊥ TEE - USED DURING ORIGINAL INSTALLATION
 - ⌣ ELBOW - 90° OR 45° FITTING
 - ▲ DENOTES ORIENTATION OF GAS ALIGNMENT RELATIVE TO SHARED PARTIES

- PRESSURE TESTING REQUIREMENTS**
- TEST PRESSURE REQUIREMENTS:
THE SYSTEM SHALL BE TESTED WITH AIR OR NITROGEN AND COMPLY WITH SASKENERGY SPI D-08-02.2
 - TEST RECORDS AND REPORTS TO BE COMPLETED IN ACCORDANCE WITH SASKENERGY SPI D-08-03.1 D-08-03.2 AND FORWARDED TO SERVICE PROVIDER ENGINEERING.
 - MODIFICATIONS TO ABOVE ONLY WITH WRITTEN AUTHORIZATION OF THE SERVICE PROVIDER ENGINEERING.

- NOTES:**
- DIMENSIONS INDICATE CENTER OF PIPE. REFER TO APPLICABLE TRENCH STANDARD DETAILS FOR ACTUAL ALIGNMENT WITHIN THE TRENCH. FOR 4 PARTY JOINT USE, REFER TO SASKPOWER 14-66.
- THE SERVICE PROVIDER LOGO AND CONTACT INFO IS PLACED HERE.
- BE SUPPORTED WHEN SQUEEZING.



REF#	DRAWING NUMBER	REMARKS	DATE	DESIGNED	INDEP CHK	DFTG CHK	INSPE	REV	ACPT	NO	REMARKS	DATE	DESIGNED	INDEP CHK	DFTG CHK	INSPE	REV	ACPT	NO	REMARKS	DATE	SCALE	DWG NO	SHEET	OF	SIZE	R	
	10									5																		
	9									4																		
	8									3																		
	7									2																		
	6									1	ADDED ITEM NUMBER 10																	
	5																											
	4																											
	3																											
	2																											
	1																											
	0																											

SaskEnergy

REGINA EAST

UNDERGROUND DUCT AND STRUCTURES FOR SUBDIVISION NAME

SERVICE PROVIDER NAME

DATE: 2012-11-26

SCALE: 1:750

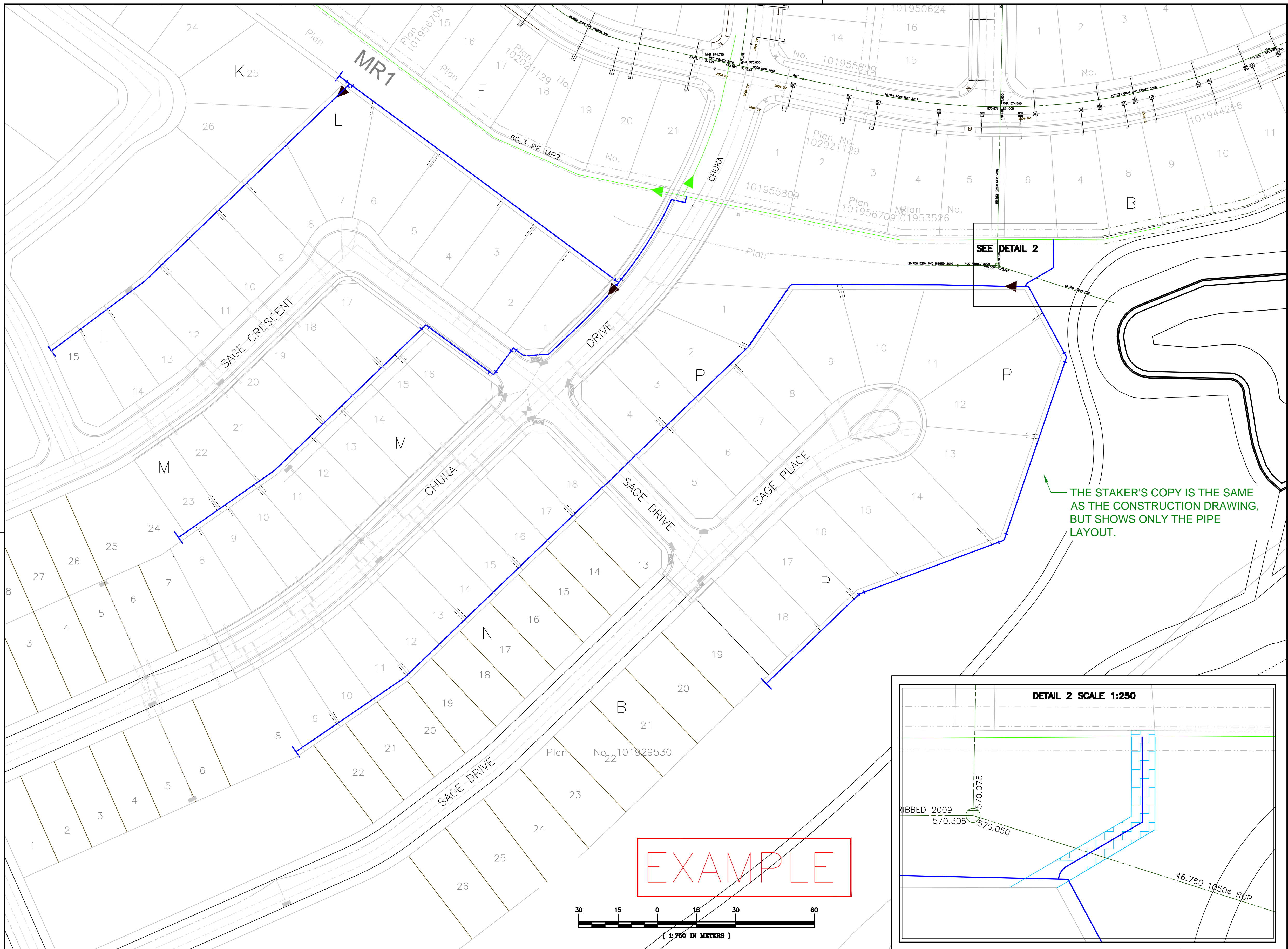
DWG NO: E07-12312988

SHEET 7 OF 7

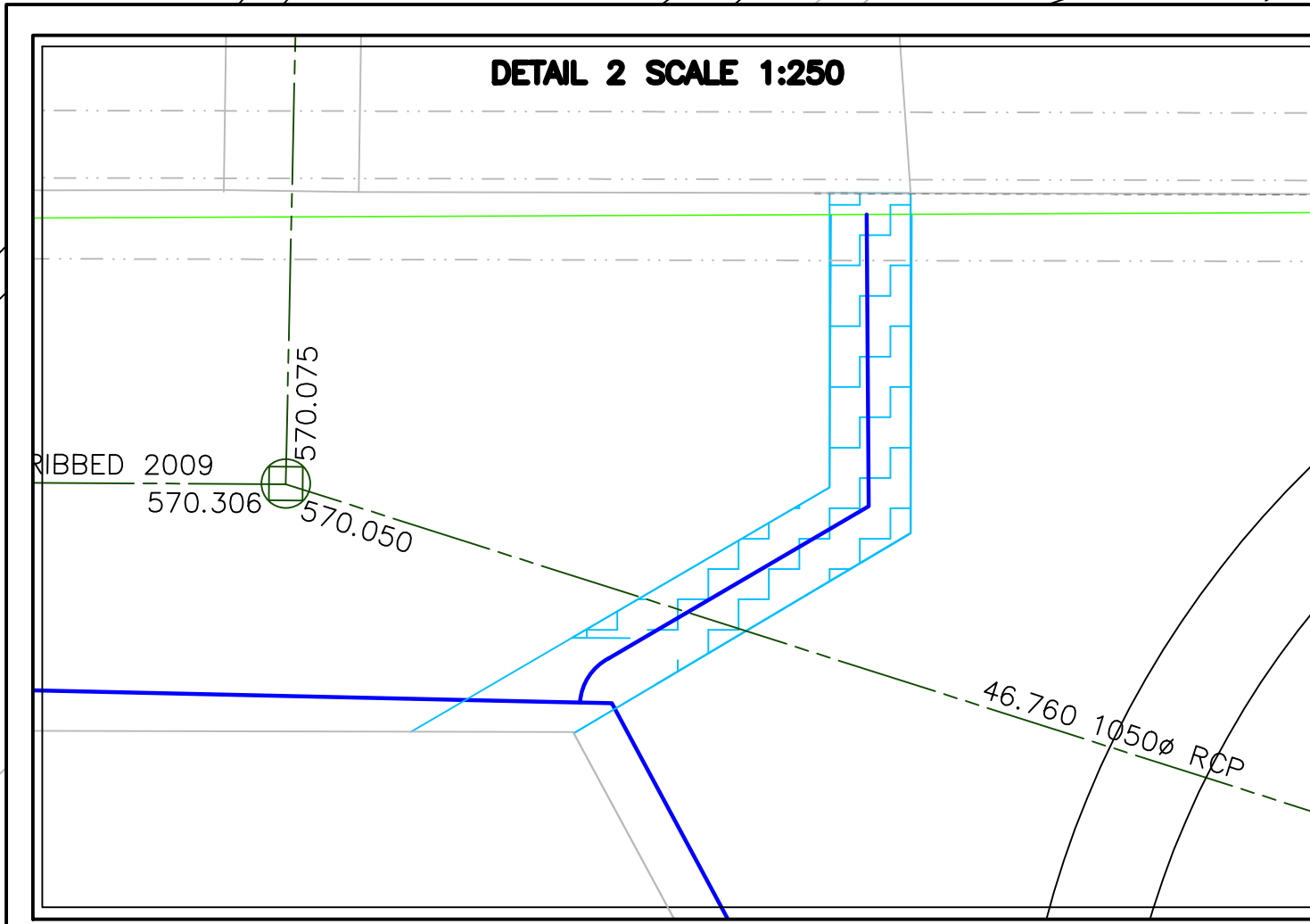
SIZE D

R 1

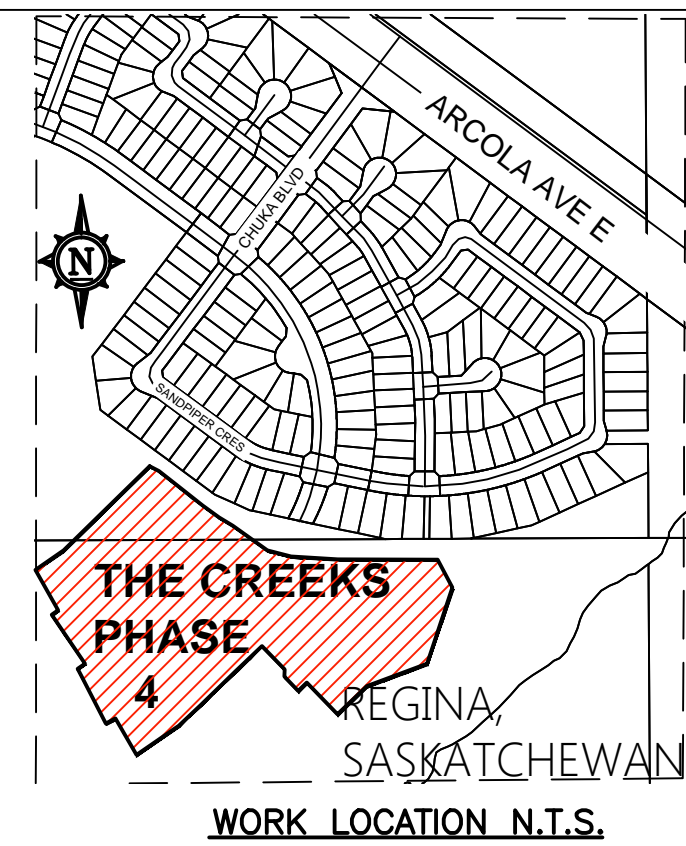
APEG-S P.ENG. SEAL GOES HERE



EXAMPLE



CALL AT LEAST TWO FULL WORKING DAYS BEFORE YOU PLAN TO DIG



ITEM	MATERIAL CODE	DESCRIPTION	QUANTITY	ACTUALS
1	01090032	PE NPS 2 60.3 OD X 5.5 WT 900M/REEL	800	
2	01090040	PE NPS 4 114.3 OD X 10.4 WT 270M/REEL	450	
3	02091535	CAP - NPS 2" - BUTT FUSION PE 2306 CSA B137.4	3	
4	02091540	CAP - NPS 4" - BUTT FUSION PE 2306 CSA B137.4	2	
6	2096638	REDUCER - NPS 4 X NPS 2 BUTT FUSION - PE	3	
7	02097490	TEE - 4" NPS - SDR11 - BUTT FUSION	3	
8	02098232	ELBOW - NPS 2" - 90 DEG BUTT FUSION - PE 2306-	3	
9	02098445	ELBOW - NPS 4" - 45 DEG BUTT FUSION - PE 2306-	5	
10	04190514	WIRE - #14 SMALL REEL (300 mtrs) COPPER WITH 2/64 PVC	1500	
11	04190520	SLEEVE - CU-1/4" DIA. X 1" LONG USED TO CRIMP	100	
12	04190700	GAS LINE MARKER BALL YELLOW, 88.0 kHz	5	
13	05537125	POST-SIGN-SEI CHANNEL (1 1/2" X 8") - 3.81 Metal	5	
14	02091408	CAP - CTS 1/2" - SOCKET FUSION - PE 2306 SDR 7-	60	
15	01090008	PE NPS 1/2 15.9 OD X 2.3 WT 300M/COIL ON PALLETS POLY WRAP	132	
16	02087472	TEE - NPS 2 X NPS 1/2 - SERVICE CLAMP-ON ELIMINATOR	60	
17	02098240	ELBOW - NPS 4" - 90 DEG BUTT FUSION - PE 2306-	2	
18	05058636	BOLT-HEX HEAD-3/8 X 2" CADMIUM PLATED C/W NUT ROUND WASHER	10	
19	02094940	COUPLING - REPAIR - NPS 4" - SDR 11 PE- DRESSER	0	
20	5643003	SIGN- DANGER FOR URBAN HIGH PRESSURE NATURAL	5	
21	2099040	COUPLING 4" IPS PART NUMBER 89 000400	1	

LEGEND

- PROPOSED MAIN TRENCH SEE SASKPOWER B-14-66
- EXISTING GAS
- 9 MATERIAL CODES
- 2.0' OFFSETS INDICATE TO LINE OF PIPE
- ▶ REDUCER
- | CAP
- TYPES OF CONNECTIONS**
- + TEE-USED DURING ORIGINAL INSTALLATION
- ⋈ ELBOW-90° OR 45° FITTING
- ▲ DENOTES ORIENTATION OF GAS ALIGNMENT RELATIVE TO SHARED PARTIES

PRESSURE TESTING REQUIREMENTS

1. TEST PRESSURE REQUIREMENTS:
THE SYSTEM SHALL BE TESTED WITH AIR OR NITROGEN AND COMPLY WITH SASKENERGY SPI D-08-02.2
2. TEST RECORDS AND REPORTS TO BE COMPLETED IN ACCORDANCE WITH SASKENERGY SPI D-08-03.1 D-08-03.2 AND FORWARDED TO SERVICE PROVIDER ENGINEERING.
3. MODIFICATIONS TO ABOVE ONLY WITH WRITTEN AUTHORIZATION OF THE SERVICE PROVIDER ENGINEERING.

NOTES:

1. DIMENSIONS INDICATE CENTER OF PIPE. REFER TO APPLICABLE TRENCH STANDARD DETAILS FOR ACTUAL ALIGNMENT WITHIN THE TRENCH. FOR 4 PARTY JOINT USE, REFER TO SASKPOWER STANDARD B-14-66.
 2. CLAMPS MUST BE SUPPORTED WHEN SQUEEZING.
- THIS STANDARD PROVIDER CONTACT INFO IS PLACED HERE.

APEG-S P.ENG. SEAL GOES HERE

SaskEnergy

REGINA EAST
UNDERGROUND DUCT AND STRUCTURES FOR SUBDIVISION NAME
SERVICE PROVIDER NAME

REF#	DRAWING NUMBER	REMARKS	DATE	DESIGNED	INDEP CHK	DFTG CHK	INSP	REV	ACPT	NO	REMARKS	DATE	DESIGNED	INDEP CHK	DFTG CHK	INSP	REV	ACPT	REGION	DISTRICT	GRID	SERV#	QUOTE#	DSGN	INDEP CHK	DFTG CHK	IFC	CCC	WR#
	10									5																			
	9									4										000									
	8									3										0									
	7									2										000									
	6									1	ADDED ITEM NUMBER 10									000									
	NO																												
	NO																												